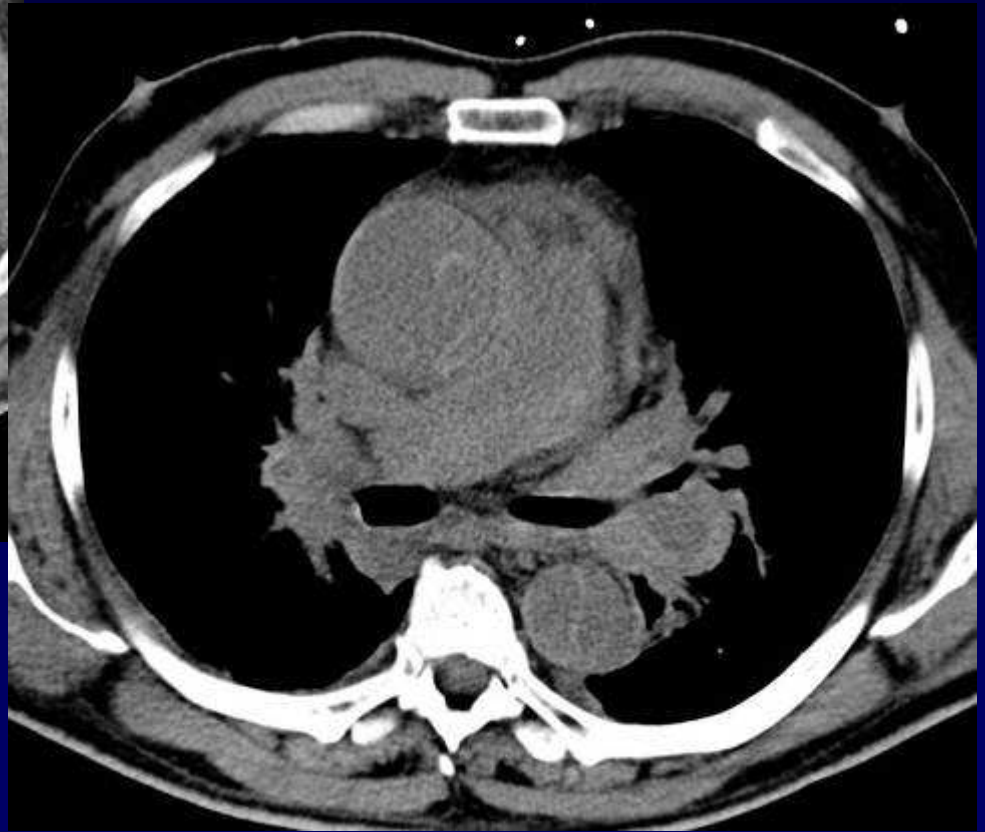


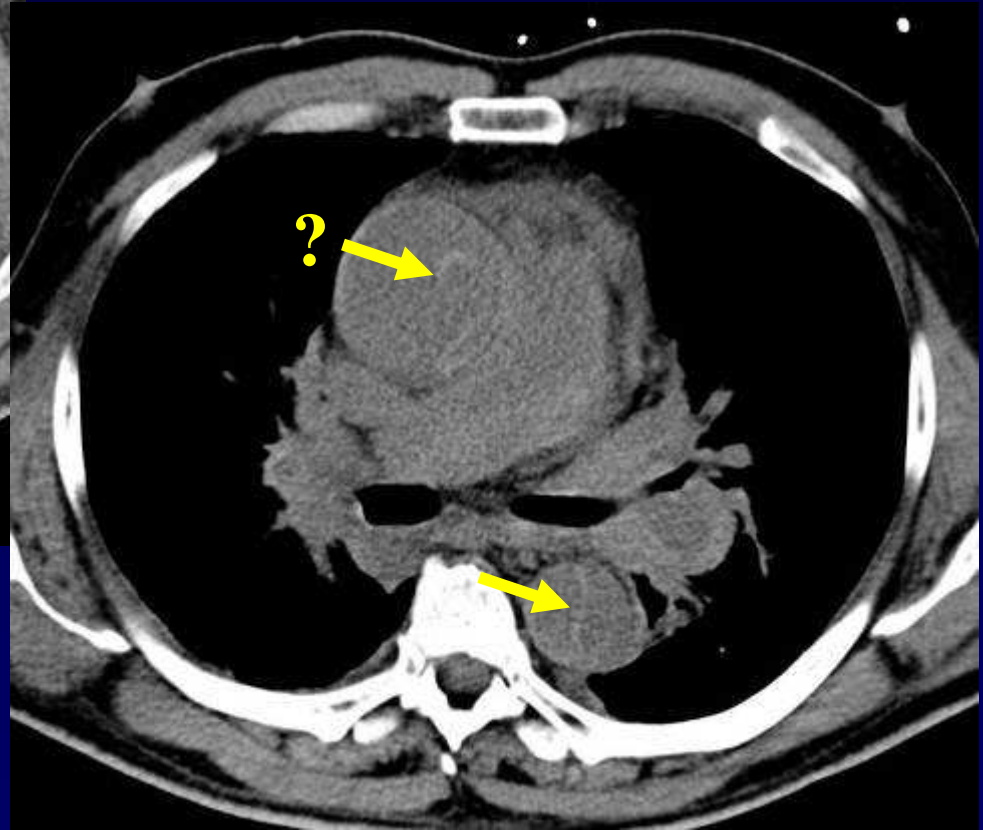


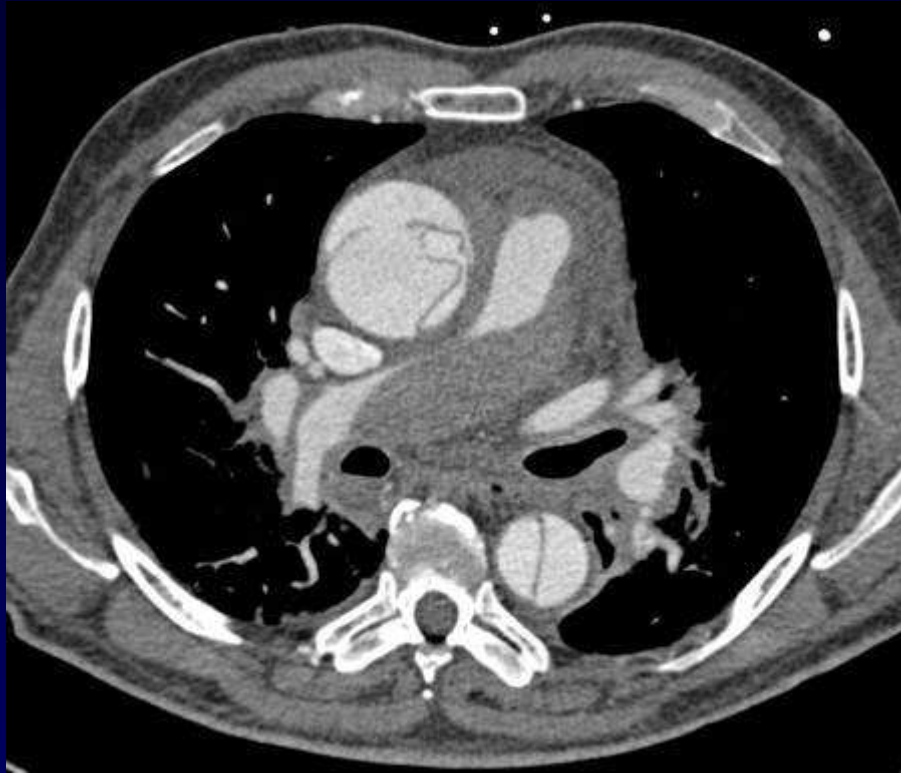
Dossier 5

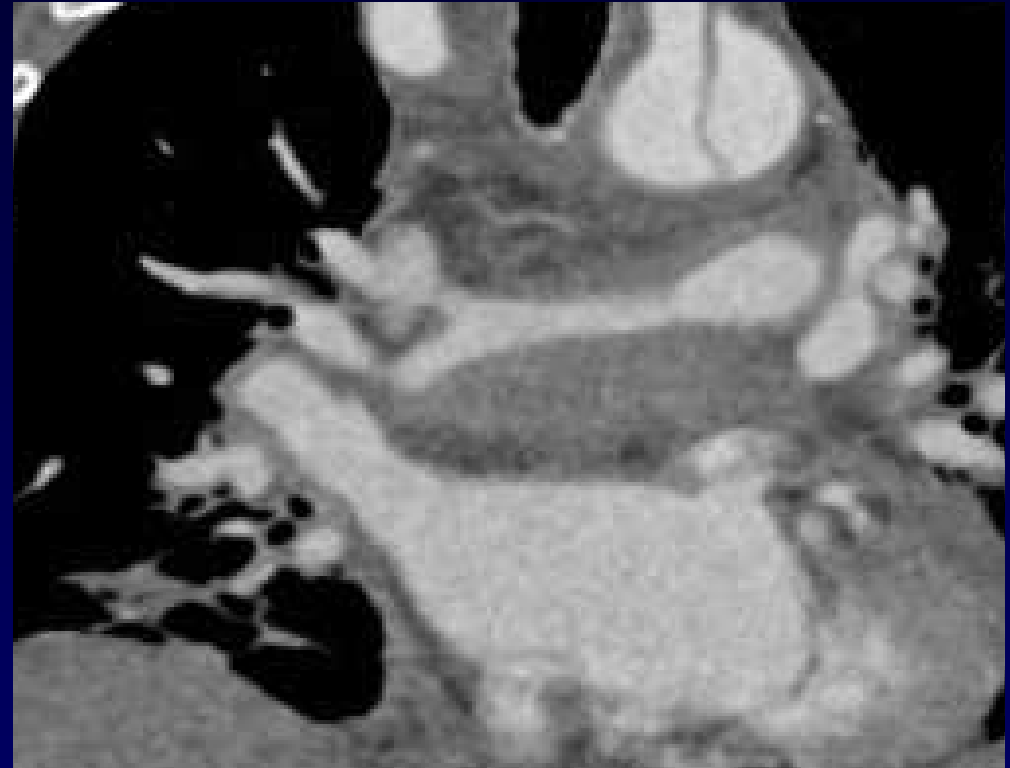
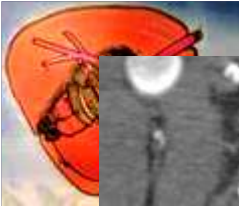
B. Ghaye

- **Homme, 62 ans**
- **Douleur thoracique violente**
- **Irradiation cervicale, dorsale et abdominale**

















Diagnostic ?



Diagnostic

Dissection aortique aiguë de type A compliquée d'un hémopéricarde.

Complication exceptionnelle à type d'hématome intramural des artères pulmonaires proximales.

Codage: Cardiovasculaire - Autres